



# J.P. Saylor & Associates, Consultants Ltd.

P.O. Box 41515, Des Moines, Iowa 50311, USA

Tel: 515.255.4970, Fax: 515.255.4925

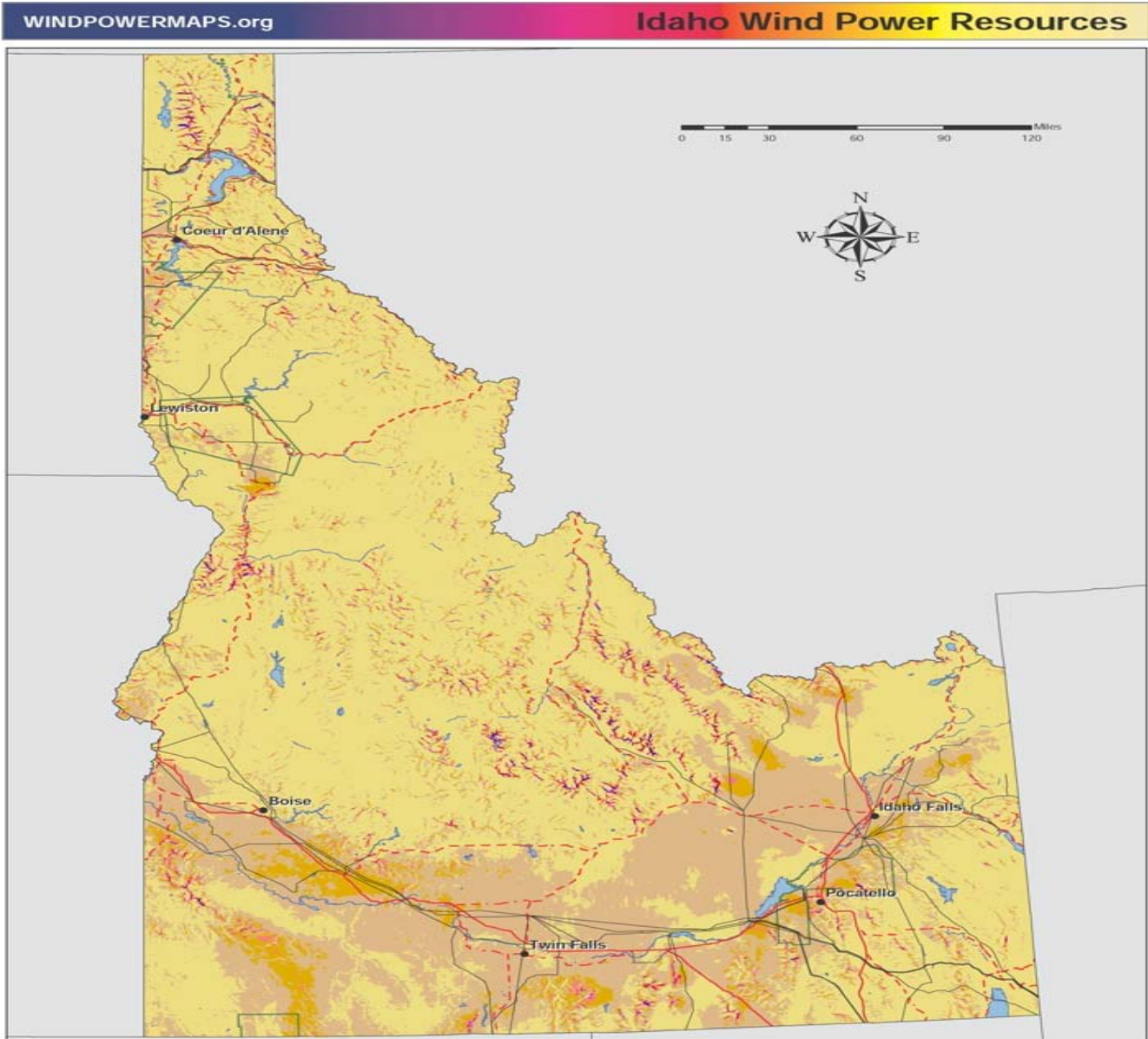
United States - Denmark

Windturbine Consultation, Engineering, Sales & Installation

“Renewable solutions for a finite planet since 1973”

Contact Us

## Wind Resource Map Idaho @ 50 m



Wind Power Class	Resource Potential	Wind Speed at 50 m (mph)
Class 1	Poor	0 - 12.5
Class 2	Marginal	12.5 - 14.3
Class 3	Fair	14.3 - 15.7
Class 4	Good	15.7 - 16.8
Class 5	Excellent	16.8 - 17.9
Class 6	Outstanding	17.9 - 19.7
Class 7	Superb	> 19.7

- Northwest Cooperative Development Center
- TrueWind Solutions
- Bonneville Power Administration
- NREL
- NORTHWEST S-E-E-D
- Integral GIS
- Major Cities
- Transmission Lines > 115 KW
- - - Limited Access Highway
- - - Highway
- ▭ Tribal Reservations

### Project Sponsors

NREL, the Bonneville Power Administration, Northwestern Energy, the Wyoming Business Council, enXco, the Northwest Power Planning Council, Zilka Renewable Energy, Klickitat County, EnronWind, ABB, Renewable Energy Systems (USA) Inc., Chelan Public Utility District, Idaho Power, Windland, Inc., WSACAA Energy Project, Vestas, Jones & Stokes, CH2M HILL, Suzlon Energy, Northwest Wildlife Consultants, Inc., and Cielo Wind Power.

The wind resource estimates presented on this map were developed by TrueWind Solutions using MesoMap, a mesoscale atmospheric simulation system, at a spatial grid resolution of 400 meters (one-quarter mile). The estimates have been validated by the National Renewable Energy Laboratory (NREL) and independent meteorologist but should be confirmed by direct measurement according to wind energy industry standards. For more information see [www.windpowermaps.org](http://www.windpowermaps.org)